

## How can I see the Maryland Online IEP?

Maryland Online IEP Demo Site

<http://www.cte.jhu.edu/MDIEPDemo>

This site provides a user's view of the Maryland Online IEP. It provides access to the functions and fields of the tool. This demonstration site does not contain any live district data. Use the following username, password, and steps to look at the existing demo case.



Username: teacher

Password: demo

1. Click "MD IEP Student". (Name)
2. Choose "IEP" button at top of page.
3. Choose View Active, Service Plan or Eligibility Status Report.
4. Use the left hand tool bar to navigate through the online tool.

### Current MD Online IEP Tool Users

Allegany County

Baltimore City

Charles County

Frederick County

Garrett County

Kent County

Prince George's County

St. Mary's County

Somerset County

Washington County

Department of Adult Corrections

Department of Juvenile Services

Maryland School for the Deaf

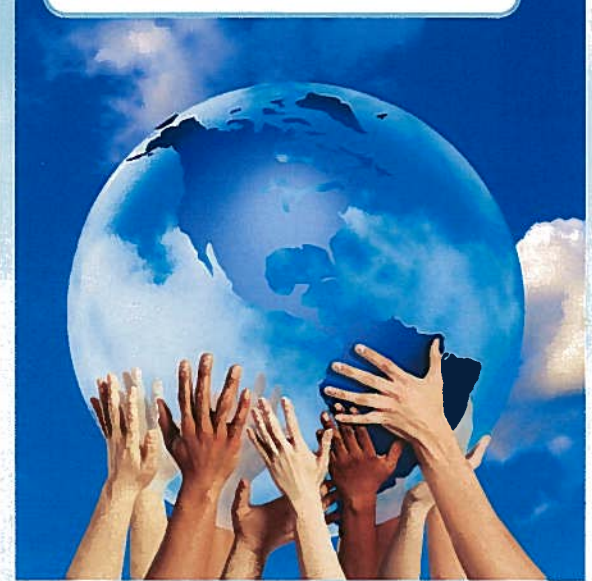
Maryland School for the Blind

MSDE Approved Nonpublic Special  
Education Facilities

*Funding provided through MSDE, Division of Special Education/Early Intervention Services from Part B. Grant #H027A070035A the U.S. Department of Education, Office of Special Education and Rehabilitative Services. The views expressed herein do not necessarily reflect the views of the U.S. Department of Education or any other Federal Agency and should not be regarded as such. The Division of Special Education/Early Intervention Services receives funding from the Office of Special Education Programs, Office of Special Education and Rehabilitative Services, U.S. Department of Education.*



Maryland Online IEP



***Maryland Online IEP:***

***An Online Tool for IEP***

***Development and Data***

***Collection***

## What is the MD Online IEP?




The MD Online IEP System has been developed through a partnership between the Maryland State Department of Education (MSDE) and Johns Hopkins

University Center for Technology in Education (CTE). Since 2003 MSDE and CTE have been working to develop a standardized IEP form and format that will enable IEP teams to develop high quality Individualized Education Programs (IEP) for students with disabilities. Data from the MD Online IEP is reported to a web-based Special Services Information System (SSIS) that will improve the accuracy and quality of special education data reported to MSDE. An administrative module has been added that provides a selection of forms and reports to assist with managing student cases. MSDE and CTE provide the tool, training, and support, as well as professional development that promotes high-quality, compliant, standards-based IEPs for Maryland students with disabilities.



## What are the benefits of using the MD Online IEP?

- No additional cost to Maryland's local school
- Systems for tool set-up, training, support, and related professional development
- Up-to-date compliance with State and federal regulations
- Links to a searchable database of the Voluntary State Curriculum
- Integrated procedural facilitators for developing high quality elements of an IEP:
  - Present Levels of Academic Achievement and Functional Performance Wizard
  - Goals Wizard
  - Accommodations Wizard
  - Assistive Technology Wizard 

Maryland Online IEP  
Administrative Module Training and Support Change Password

LOG IN

Active  Banned  Determined not eligible



Search by Unique Student ID# (State)  
Unique ID#

Search by Local Student ID#  
Unique ID#

Search by Social Security Number  
Sec. Sec. #

Search by Personal Information  
If you are unsure of the exact spelling of any information simply enter the first letter of letters of the name and search  
First Name  Last Name

## Benefits, continued

- Web-based and accessible at any time from any internet connection
- Secure system with differentiated levels of access for users (District Administrator, School-Based Administrator, Teacher, etc.)
- Real-time data that meets all SSIS data reporting requirements
- Improved error checking and data validation
- Ability to manage student cases, meetings, IEP users, and reports for data analysis
- Forms to assist in the IEP process 
- Reports to assist with summarization of data 

## Who can I contact for more information?

**Sharon West**

Branch Chief, MSDE

410-767-0244 (office)

swest@msde.state.md.us

**Dianne Tracey, M.Ed.**

Program Coordinator, CTE

410-516-9834 (office)

ditracey@jhu.edu